

# THE NEXT GREEN INNOVATION

## Green 16™



 **4-IN-1 DIGITAL** [PANO | CEPH | 3D CBCT | MODEL]

 **MULTI FOV 3D CBCT**

 **GREEN SCAN TIME** [4.9 sec 3D CBCT | 1.9sec CEPH | 7.0sec PANO ]

 **LOW DOSE AND HIGH IMAGE QUALITY**

 **ART-V, INNOVATIVE ARTEFACT REDUCTION**

 **3D MODEL SCAN**

 **41 LAYERS BEYOND CONVENTIONAL 2D WITH INSIGHT PAN**

# THE ADVANCED 4-IN-1 DIGITAL X-RAY IMAGING SYSTEM

The Green 16 is an advanced 4-in-1 digital x-ray imaging system that incorporates PANO, CEPH (Optional), 3D CBCT, and MODEL Scan. It provides high quality images with lower radiation by combining image processing and accumulated experience in dental imaging from Vatech. This will increase your diagnostic accuracy with improved treatment planning and patient satisfaction.



## ✓ FOV MULTI FOV 3D CBCT

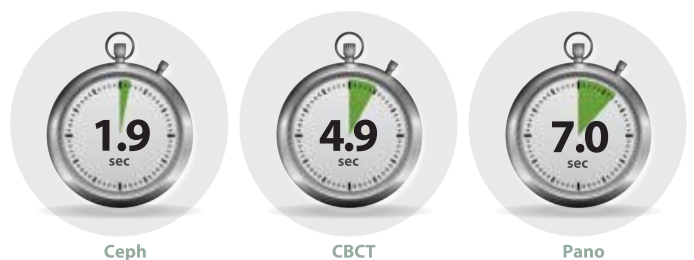
With Green 16, dentists can choose the optimal FOV for their patients. This will ensure that dentists capture the right region of interest, for a clear and detailed view of the proper area. Based on the patient's diagnostic needs, Green 16 can minimize the area of exposure.

Green 16 offers dentists the choice between 5x5, 8x5, 8x9, 12x9 or 16x9, means that dentists can decide what level of treatment is most suitable.

Endo & Single implant	Single Arch	Dual Arch	Full Arch	Sinus, TMJ or Airway
5x5	8x5	8x9	12x9	16x9
Optimal size to cover 3~4 teeth through capturing ROI	Suitable for multiple implant surgeries	Basic FOV size & select a left or right or center arch	Optimal size for full arch diagnosis including wisdom tooth extraction	Optimal size for sinus & TMJ or Airway diagnosis

## 🕒 GREEN SCAN TIME

Green 16 minimizes motion artefacts using its green scan time. Reducing scan time is simply one of the ways Vatech aims to improve patient's health, safety and dental experience.

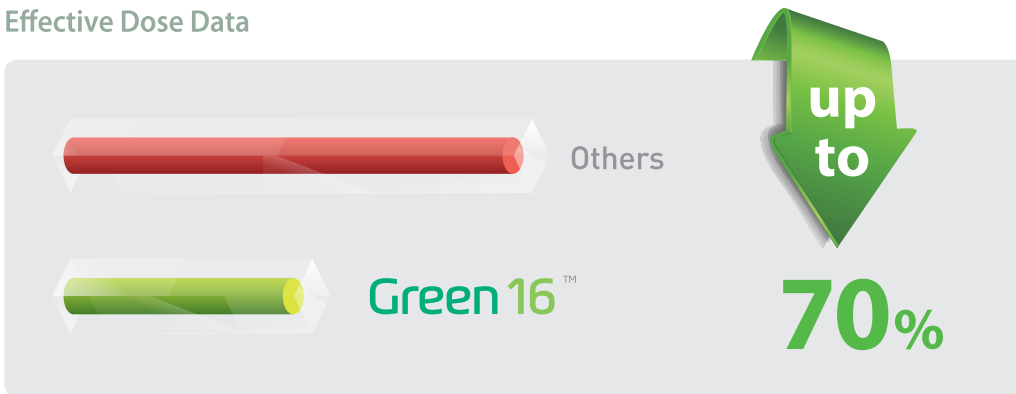




## LOW DOSE AND HIGH IMAGE QUALITY

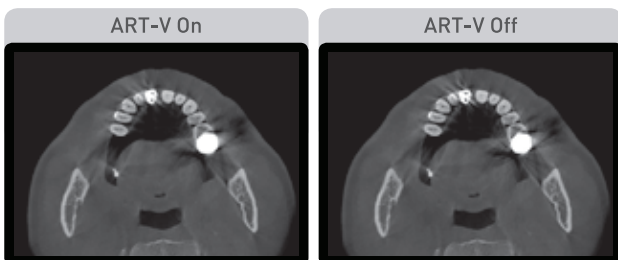
The technological advancements at Vatech has been able to break many conventions in dental radiography. It was always believed that with low radiation comes inferior image quality, which renders it useless in clinical diagnosis. However, the Green 16 provides clinically diagnosable x-ray scans at a low x-ray dosage. With low dose radiography, achieving clinically diagnosable image quality is the new golden-standard.

### Effective Dose Data



## THE ART-V

The presence of metal traditionally degrades the quality of 3D CBCT images. ART-V is designed to reveal dentition obscured by common metal artefacts, helping dentists visualise 3D CBCT scans, diagnose accurately and plan treatments greater confidence.



\*ART-V is the new name of Vatech's MAR function. (Artefact Reduction Technology of Vatech)

## 3D MODEL SCAN

3D model scan enables dentists to store plasters as digital models.

### DIGITIZED ONE-STOP CLINIC



#### CAD/CAM integration

- Sufficient level of detail for surgical guide design



#### Specially designed Jig

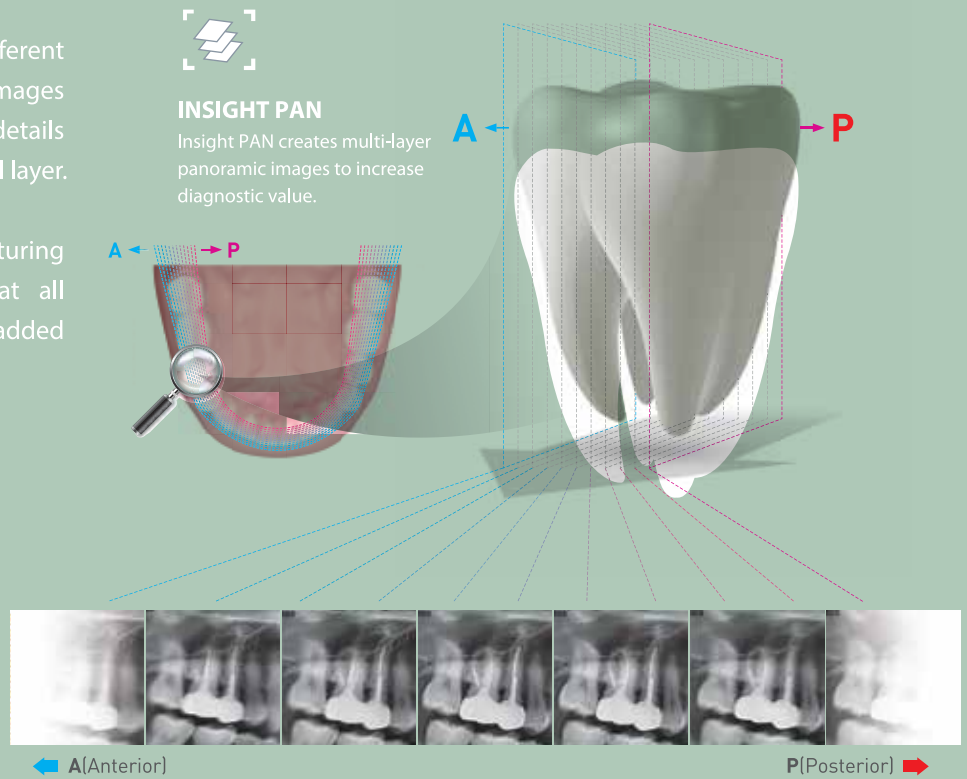
- Stable protection from partial model to full model

\*3D scanning for Plaster Cast with FOV 8x9 (cm)

## SEE 41 LAYERS BEYOND CONVENTIONAL 2D WITH INSIGHT PAN

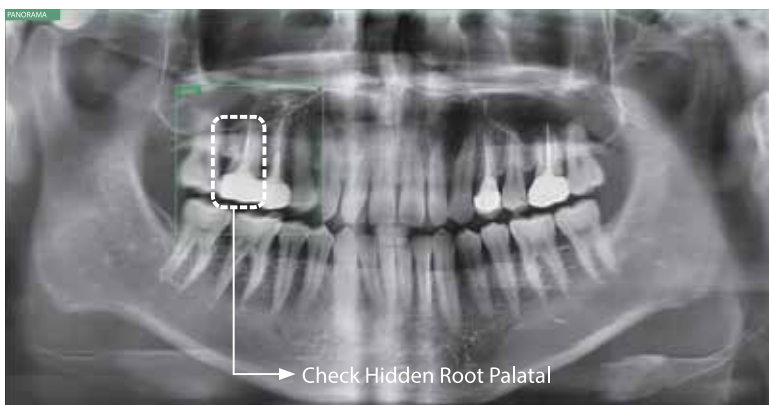
Since each patient has a slightly different arch, conventional panoramic images may occasionally miss important details which land outside of a single focal layer.

Insight PAN is capable of capturing 41-layered images, ensuring that all details are captured in a depth-added panoramic image.

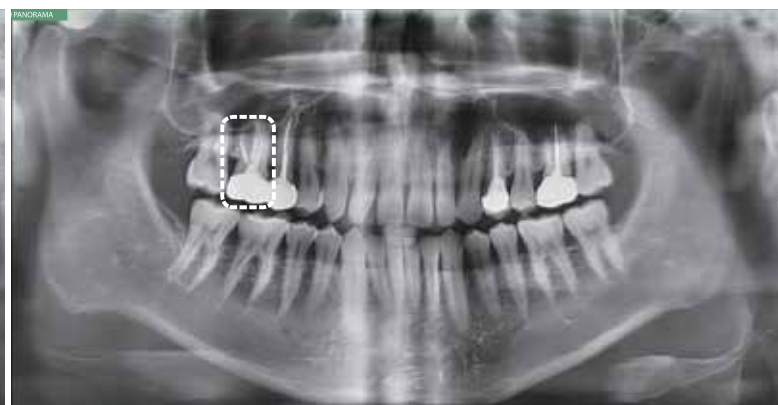


## EXPERIENCE THE DIFFERENCES

The next-generation in panoramic technology, Insight PAN allows dentists to obtain never-before-seen in-depth diagnostic information from the anterior to posterior on a digital panoramic image. The Insight feature allows dentists to explore their region of interest, giving them the capability to find mesiobuccal, distobuccal, and even palatal root information.



INSIGHT FEATURE



STANDARD PANORAMA

## Use the Insight to Discover:

- ✓ Hidden multi roots and canals
- ✓ Location of pulp and gutta-percha
- ✓ Broken files or root fractures

1.9  
sec

## MINIMIZE MOTION ARTEFACTS WITH RAPID CEPH TECHNOLOGY

The next step in cephalometric technology, Vatech's new Rapid Ceph minimizes motion artefacts and enables faster diagnostic workflow while providing the highest quality digital images.

### GREAT CLINICAL CARE WITH RAPID CEPH TECHNOLOGY



1.9  
sec



#### LATERAL

Provides specialized high quality images to suit orthodontics and maxillofacial surgeries.



#### FULL LATERAL

Full lateral image size is 30% wider and shows the occipital area of the patient, which enables comprehensive diagnosis.

#### PA



#### Carpus



#### SMV(Submentovertex)





## PRODUCT CONFIGURATION

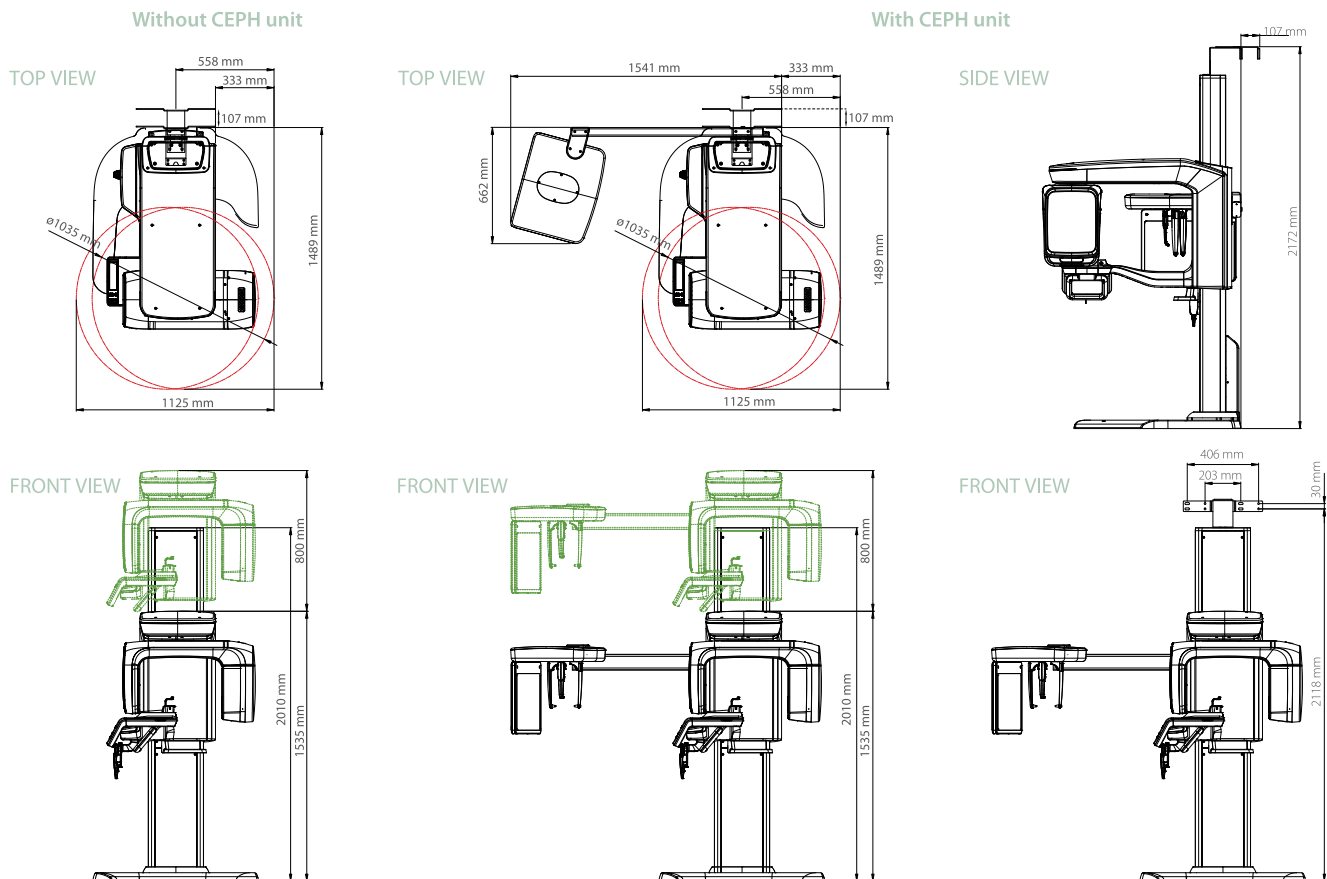
	CBCT	PANO	CEPH
Green 16	•	•	
Green 16 SC	•	•	•

## SPECIFICATIONS [Green 16: **PHT-65LHS**]

Function		CBCT + PANO + CEPH + Model Scan
Focal Spot Size		0.5 mm (IEC60336)
3D CBCT FOV Size		5x5 / 8x5 / 8x9 / 12x9 / 16x9 cm
Voxel Size	5x5	0.08 mm / 0.12 mm
	8x5, 8x9	0.12 mm / 0.2 mm
	12x9, 16x9	0.2 mm / 0.3 mm
Scan Time	PANO	7.0 sec / 14.1 sec
	CEPH	1.9 sec / 3.9 sec
	CBCT	4.9 sec (5x5 - 8x9) / 9.0 sec (12x9 - 16x9)
Gray Scale		14 Bit
Tube Voltage		60 - 99 kVp
Current		4 - 16 mA
Weight	Without CEPH unit	134 kg - without base 187 kg - with base
	With CEPH unit	159 kg - without base 212 kg - with base
Dimensions	Without CEPH unit	1,125 mm (L) x 1,489 mm (W) x 2,335 mm (H)
	With CEPH unit	1,874 mm (L) x 1,489 mm (W) x 2,335 mm (H)

\*The specifications are subject to change without prior notice.

## DIMENSIONS [Unit: mm]



**\*An additional 107mm of space is required behind the unit for wall mount bracket installation (mandatory).**